

CG12-100X 12V 100Ah(20hr)

Gel battery shows some distinctive advantages over flooded battery or AGM battery, such as super thermal stability, high deep discharge capability, good recovery from deep discharge, even if the battery is left discharged for thirty days, it will still recover to 100% of capacity. With the above-mentioned advantages, the gel battery has long service life, is specially suitable for motive power applications, such as golf trailer, scrubber, forklift, etc. The deep discharge cycles increased 50% as compared with the AGM battery.



Battery Construction

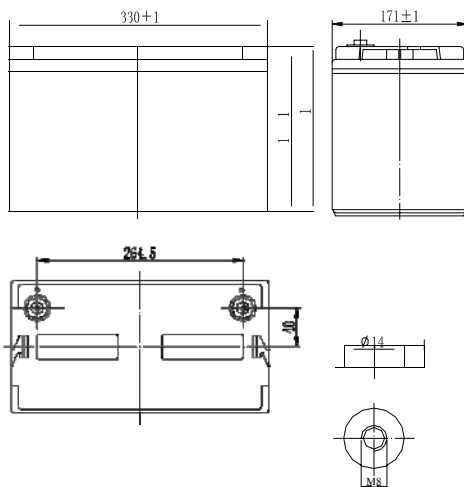
Component	Positive plate	Negative plate	Container	Cover	Safety valve	Terminal	Separator	Electrolyte
Raw material	Lead dioxide	Lead	ABS	ABS	Rubber	Copper	Fiberglass	Gelled acid

General Features

- Micro millimeter SiO₂ and H₂SO₄ gelled electrolyte technology for efficient gas recombination of up to 99% and freedom from electrolyte maintenance or water adding.
- Not restricted for air transport-complies with IATA/ICAO Special Provision A67.
- UL-recognized component.
- Can be mounted in any orientation.
- Computer designed lead, calcium tin alloy grid for high power density.
- Long service life, float or cyclic applications.
- Maintenance-free operation.
- Low self discharge.

Dimensions and Weight

Length(mm / inch)	330 / 12.99
Width(mm / inch)	171 / 6.73
Height(mm / inch)	215 / 8.46
Total Height(mm / inch)	222 / 8.74
Approx. Weight(Kg / lbs)	32 / 70.5



Performance Characteristics

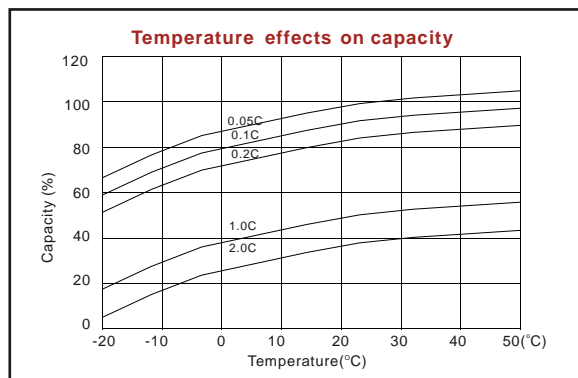
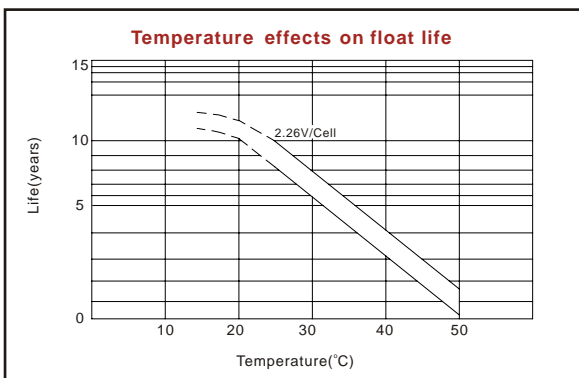
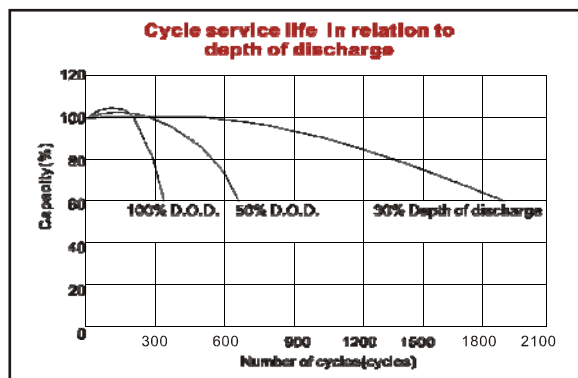
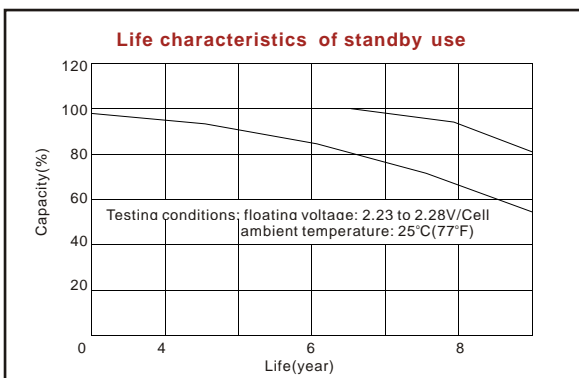
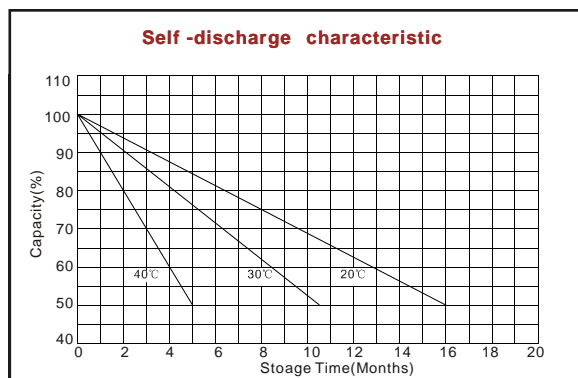
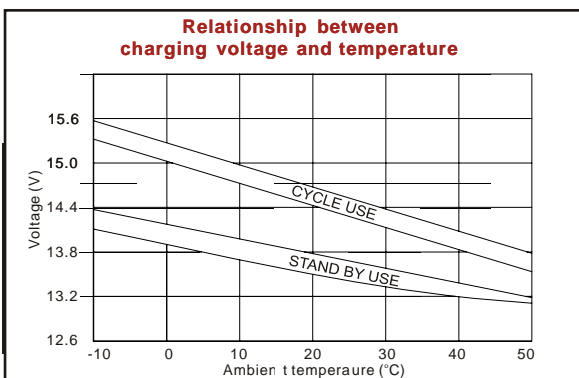
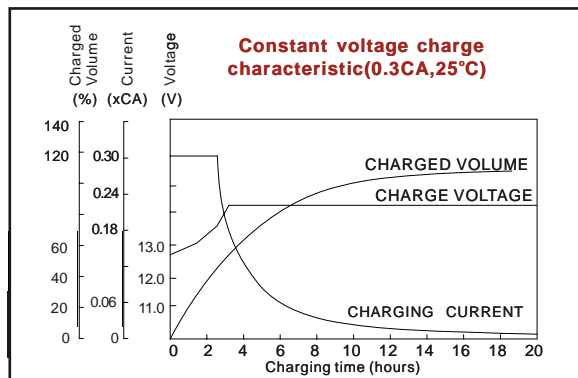
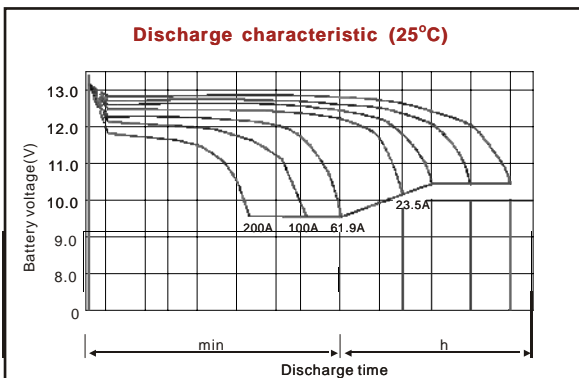
Nominal Voltage	12V
Number of cell	6
Design Life	10 years
Nominal Capacity 77°F(25°C)	
20 hour rate (5A, 10.5V)	100Ah
10 hour rate (8.95A, 10.5V)	89.5Ah
5 hour rate (16.4A, 10.5V)	82Ah
1 hour rate (61.9A, 9.6V)	61.9Ah
Internal Resistance	
Fully Charged battery 77°F(25°C)	5.2mOhms
Self-Discharge	
3% of capacity declined per month at 20°C(average)	
Operating Temperature Range	
Discharge	-20~60°C
Charge	-10~60°C
Storage	-20~60°C
Max. Discharge Current 77°F(25°C)	900A(5s)
Short Circuit Current	2100A
Charge Methods: Constant Voltage Charge 77°F(25°C)	
Cycle use	14.28~14.52V
Maximum charging current	30A
Temperature compensation	-30mV/°C
Standby use	13.38~13.68V
Temperature compensation	-20mV/°C

Discharge Constant Current (Amperes at 77°F25°C)

End Point Volts/Cell	5min	10min	15min	30min	1h	3h	5h	10h	20h
1.60V	299	212	169	105	61.9	25.2	17.7	9.80	5.15
1.65V	283	203	161	101	59.8	24.3	17.4	9.54	5.10
1.70V	267	191	153	96.2	57.5	23.5	16.9	9.22	5.04
1.75V	252	180	146	91.5	54.9	22.7	16.4	8.95	5.00
1.80V	236	170	137	86.6	52.1	21.6	15.9	8.62	4.80

Discharge Constant Power (Watts at 77°F25°C)

End Point Volts/Cell	5min	10min	15min	30min	45min	1h	2h	3h	5h
1.60V	528	376	309	195	150	121	66.7	48.6	34.2
1.65V	506	363	298	189	145	118	65.2	47.5	34.1
1.70V	484	348	288	183	141	115	63.7	46.5	33.4
1.75V	460	332	276	177	136	111	61.9	45.5	32.7
1.80V	436	317	263	169	130	106	59.5	43.7	32.1





ISO9001:2000



MH25860



G4M19906-9202-E-16



www.vision-batt.com

Shenzhen Center Power Tech. Co., Ltd.
 ::RM 1801, 18/F, Cangsong Bldg., Terra 6 Rd, Chegongmiao, Futian District, Shenzhen 518040 China
 Tel: (+86-755) 8343 5688 Fax: (+86-755) 8384 9585 E-mail: sales@vision-batt.com